



Aluminum Full View Doors

Amarr® 3552 / Amarr® 3502

Amarr 3552 and 3502 Aluminum Full View doors are constructed of 2" thick extruded aluminum rails and stiles and can be fitted with a variety of full-view glass options, solid aluminum, perforated or louvered ventilation panels. Perfect for automotive showrooms and repair centers, service stations, car washes, fire houses, restaurants, and sports complexes; our aluminum doors create a clean style for any facility. These doors can be mounted stationary or operative as a stylish alternative for al fresco situations.

The **ClearView Aluminum Strut System** provides added strength and durability to larger Amarr 3552 door sizes up to 24' 2", without restricting the viewing area.



Amarr 3502 with Aluminum top and bottom panels.

CONSTRUCTION

Amarr 3552

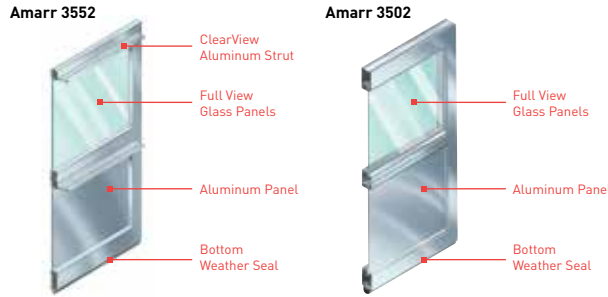
Heavy-duty Aluminum door

- 2" thick extruded aluminum rails & stiles
- Available in 1" width increments

Amarr 3502

Medium-duty Aluminum door

- 2" thick extruded aluminum rails & stiles
- Available in 1" width increments



Track: All Amarr doors are available with both 2" or 3" track in Standard Lift, High Lift, Vertical Lift, Low Headroom, and Follow the Roof Pitch. Custom track configurations are also available. For drawings and more information, please visit www.amarr.com.

Springs: Torsion springs are oil tempered, helical wound and custom computed for each door for a minimum 10,000 cycle life. Optional springs are available up to 100,000 cycle life.

Hardware: Amarr hardware includes minimum 14-gauge galvanized steel hinges and 13-gauge galvanized steel track brackets. All rollers have minimum 10-ball bearings.

SPECIFICATIONS

	Heavy-duty Amarr 3552 formerly Amarr 3550	Medium-duty Amarr 3502 formerly Amarr 3500
MATERIAL	Aluminum	Aluminum
CONSTRUCTION LAYERS	Single	Single
PANEL OPTIONS		
Full View	•	•
Perforated	•	
Louvered Ventilation	Fall 2015	
Aluminum	•	•
Insulated Aluminum	•	
INSULATION¹	Polystyrene	NA
R-VALUE²	2.53	NA
DOOR THICKNESS	2" (5.1cm)	2" (5.1cm)
MINIMUM WIDTH	2'	2'
MAXIMUM WIDTH	24' 2"	12' 2"
MINIMUM HEIGHT	6'	6'
MAXIMUM HEIGHT	20' 1"	12' 1"
WIND LOAD³ AVAILABLE	•	•
FINISH WARRANTY⁴	5 Years	5 Years
WORKMANSHIP/HARDWARE WARRANTY⁴	1 Year	1 Year

¹ Insulation has passed self-ignition, flamespread and smoke developed index fire testing. ² Calculated door section R-value is in accordance with DASMA TDS-163. ³ It is your responsibility to make sure your garage door meets local building codes. ⁴ For complete warranty details, visit amarr.com or contact your local Amarr dealer.

PANEL OPTIONS

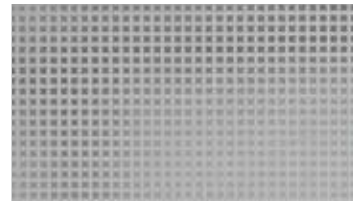


ALUMINUM FULL VIEW



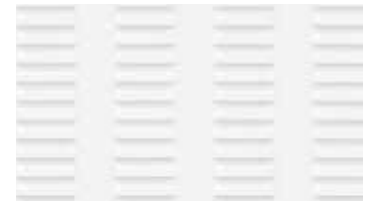
ALUMINUM & INSULATED ALUMINUM

Available Fall 2015



PERFORATED ALUMINUM*
0.312" square perforations on 1/2" centers

*Mill finish only. Custom powder coat available Fall 2015



LOUVERED ALUMINUM
7 columns of 12] 3" x 3/4" vents on a 4' x 24" panel

COLORS

Actual color may vary from sample shown. Custom Powder Coat options available for Amarr 3552 only.



*Amarr 3552 only.

GLAZING OPTIONS

	Amarr 3552	Amarr 3502
DSB GLASS		
Single or Insulated	•	Single Only
TEMPERED GLASS		
Single or Insulated	•	Single Only
OBSCURE GLASS		
Single or Insulated	•	Single Only
THERMAPRO LOW-E GLASS	•	Single Only
POLYCARBONATE GLAZED	•	n/a
ACRYLIC GLAZED	•	•
CUSTOM OPTIONS	•	•



Amarr 3552 with two Louvered Aluminum bottom panels.

ENTREMATRIC

Entrematic
165 Carriage Court
Winston-Salem, NC 27105
800.503.DOOR
www.amarr.com

FOR TECHNICAL
QUESTIONS:
1.866.366.4814



Entrematic products may be the subject of one or more U.S. and/or foreign, issued and/or pending, design and/or utility patents. Entrematic and Amarr as words and logos are trademarks owned by Entrematic Group AB or companies within the Entrematic Group. Technical data subject to change without notice.

©Entrematic Group AB 2015. All rights reserved. Printed in USA Form #6220915/15M/GVS